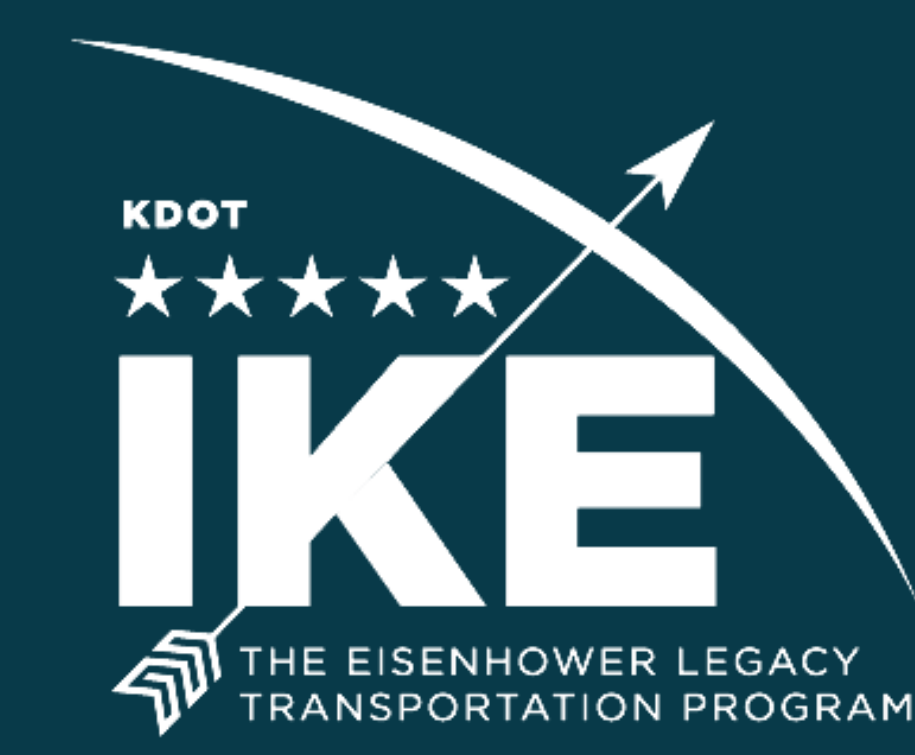
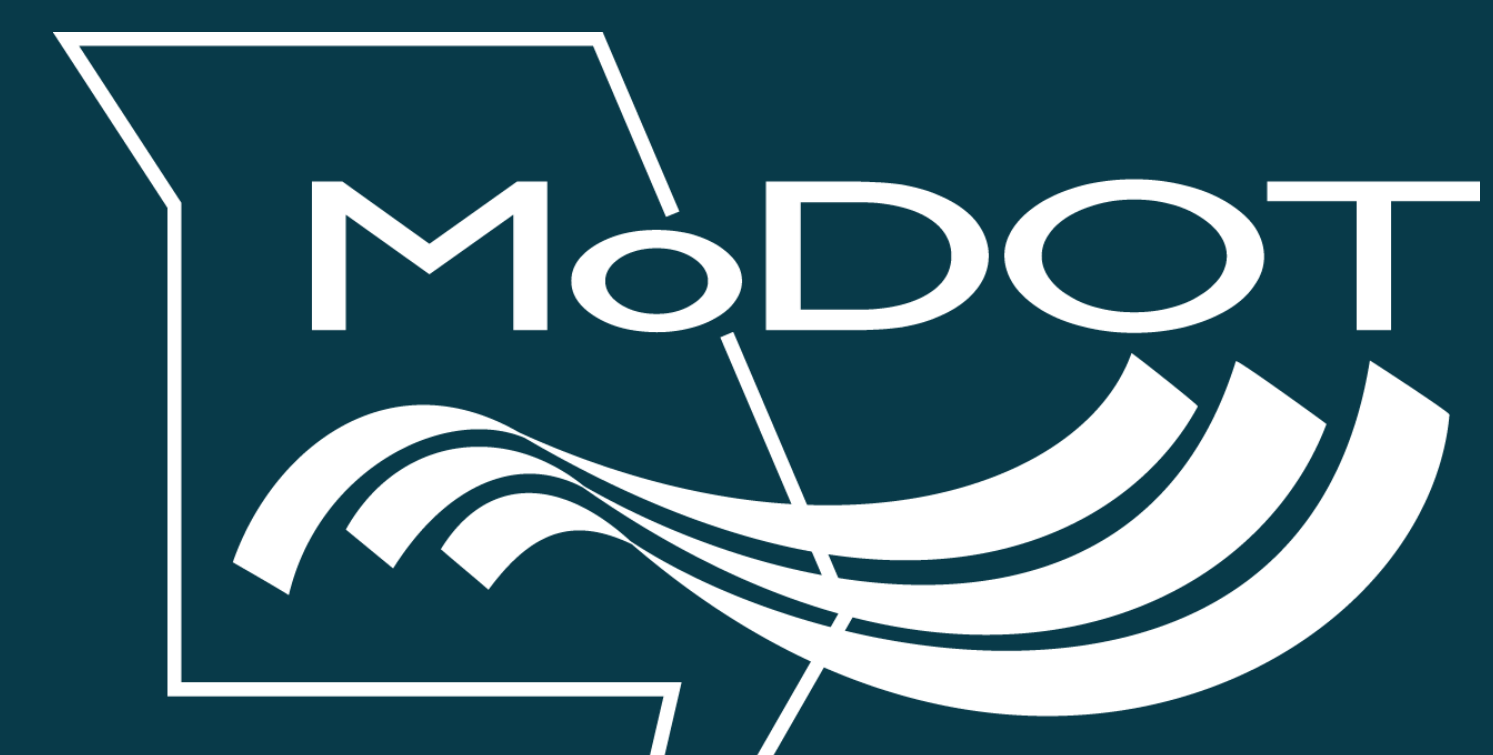


  
**CENTENNIAL**  
B R I D G E

# WELCOME

**TUESDAY, FEBRUARY 21, 2023**





# A VITAL CONNECTION

## THE CURRENT BRIDGE:

- Serves an important transportation role.
- Has outlived its functional lifespan.
- Only has two lanes — one in each direction.
- Does not have a combined use pedestrian and bicycle path.
- Is vulnerable to flood damage from erosion, debris and barge collisions.
- Creates logistical challenges for Fort Leavenworth.





# ANTICIPATED SCHEDULE

2023

**FEBRUARY**

★ Public Meeting

**MAY**

Environmental (NEPA) Public Hearing

**OCTOBER**

Field Review

2024

**JANUARY**

Begin Right-of-Way Activities

2025

**2025**

Continue Right-of-Way Activities

2026

**APRIL**

★ Complete Right-of-Way Activities

**JUNE**

★ Design Complete

**AUGUST**

Bid Letting\*

2027

**EARLY 2027**

★ Construction Begins\*

2028

2029

**2029**

Construction Complete\*

★ New Centennial Bridge Opens\*

Old Centennial Bridge Demolished\*

★ Key milestones

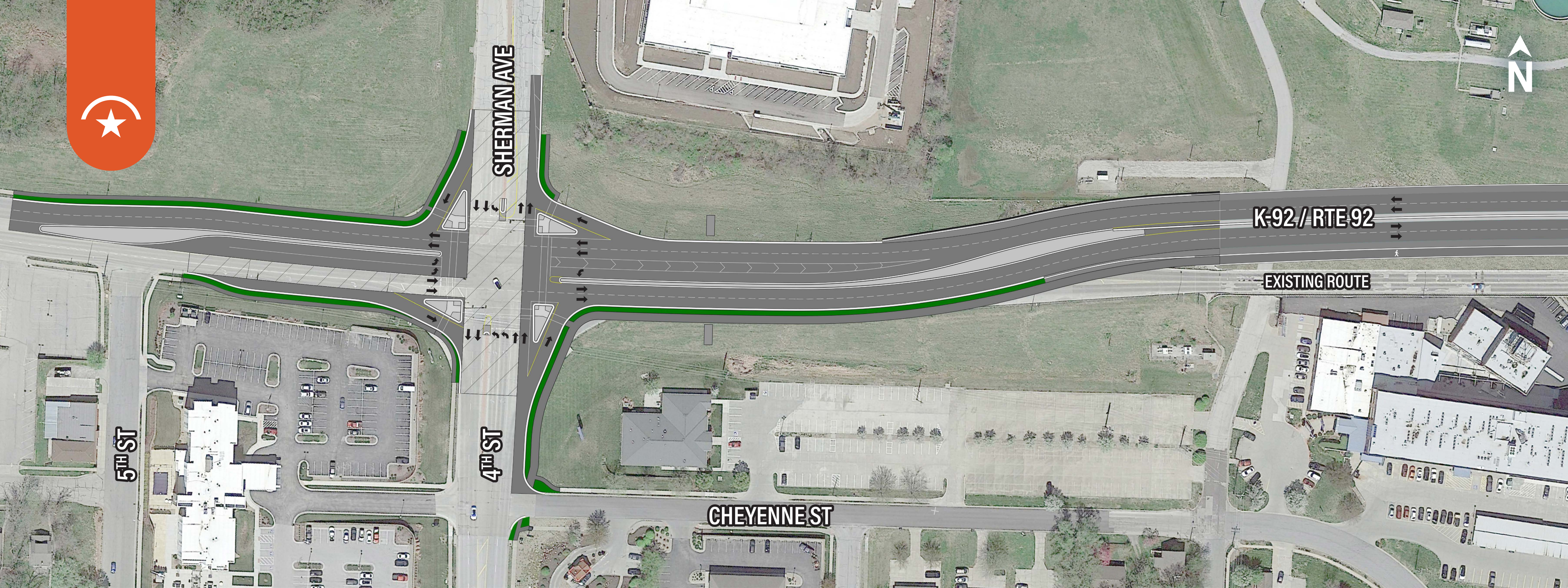
\*Tentative date pending approval for construction.



# THE NEW BRIDGE

## BENEFITS INCLUDE:

- The new bridge will not be tolled.
- Doubling the number of traffic lanes.
- Improving flood resilience in the area.
- Providing combined use pedestrian and bicycle accommodations.
- Resolving Missouri River navigation challenges.



# KANSAS ROADWAY IMPROVEMENTS

## SHERMAN AVE INTERSECTION:

- Will maintain traffic through construction.
  - With the exception of limited, temporary closures, the existing bridge will remain open as the new bridge is constructed.
- Enhanced intersection at 4<sup>th</sup> Street.
- Right-In Right-Out at 5<sup>th</sup> Street.



# MISSOURI ROADWAY IMPROVEMENTS

## ROUNDBOUT OPTIMIZATION:

- Additional lanes west of roundabout.
- New westbound bypass lane.
- Traffic maintained through roundabout during construction.



# ENVIRONMENTAL

An Environmental Assessment (EA) is required by NEPA (National Environmental Policy Act) and is administered by the Federal Highway Administration.

## THE EA PROCESS:

- Gathers information on existing conditions:
  - Natural Resources
  - Human Environment
  - Physical Resources
- Considers a range of reasonable alternatives.
- Analyzes potential impacts of alternatives on existing conditions.
- Complies with other applicable environmental laws and executive orders.

## ENVIRONMENTAL STUDIES

-  Threatened/endangered species
-  Wetlands and streams
-  Water quality
-  Air quality
-  Historic and cultural sites
-  Social and economic resources
-  Noise environs
-  Community impacts



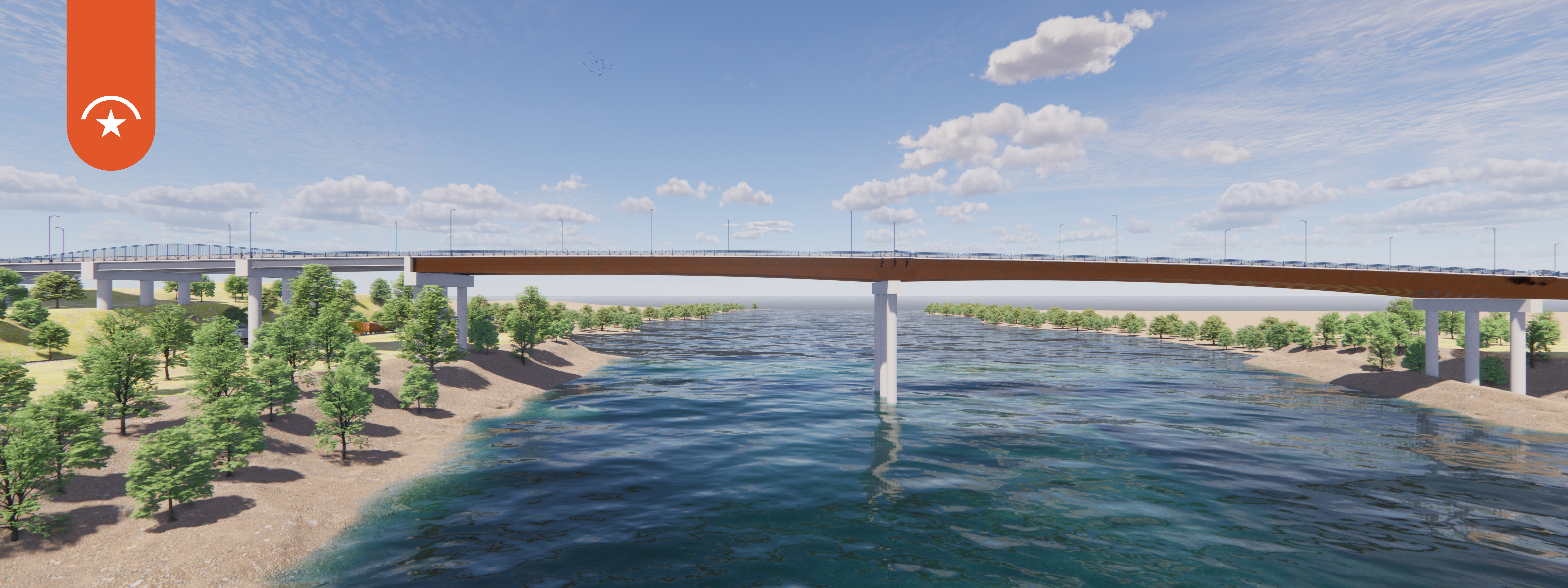
# TRAFFIC

## BRIDGE & ROADWAY DESIGN FACTORS:

- Approximately 5 million bridge crossings per year.
- Traffic volume and pattern studies.
- Anticipated future roadway usage, including 20-year forecasts.
- Traffic incident and safety reports.
- Public input, including requests for pedestrian and bicycle path.







# BRIDGE FEATURES

## EXPANDING IN NEW DIRECTIONS BY:

- Increasing from two to four total traffic lanes (two in each direction).
- Providing a combined use pedestrian and bicycle path.
- Improving navigation clearance for river traffic.

Please note that design and aesthetic features may change due to permitting or construction needs.



# LEAVENWORTH COUNTY HISTORICAL SOCIETY



## DID YOU KNOW?

- The “Blue Bridge” is a much-loved and iconic symbol for Leavenworth and attracts photographers year-round.
- Centennial Bridge was named the most beautiful bridge of 1955 by the American Institute of Steel Construction.
- The April 2, 1955, bridge opening ceremony was attended by 5,000 people. A dedication plaque on the bridge reads: “A memorial dedicated to those who gave their lives to their country, 1854-1954.”



- Replaced the 80-year-old Fort Leavenworth Bridge, which had been in service since ox-cart days.
- The Old Fort Bridge closed the day the current Centennial Bridge was dedicated.

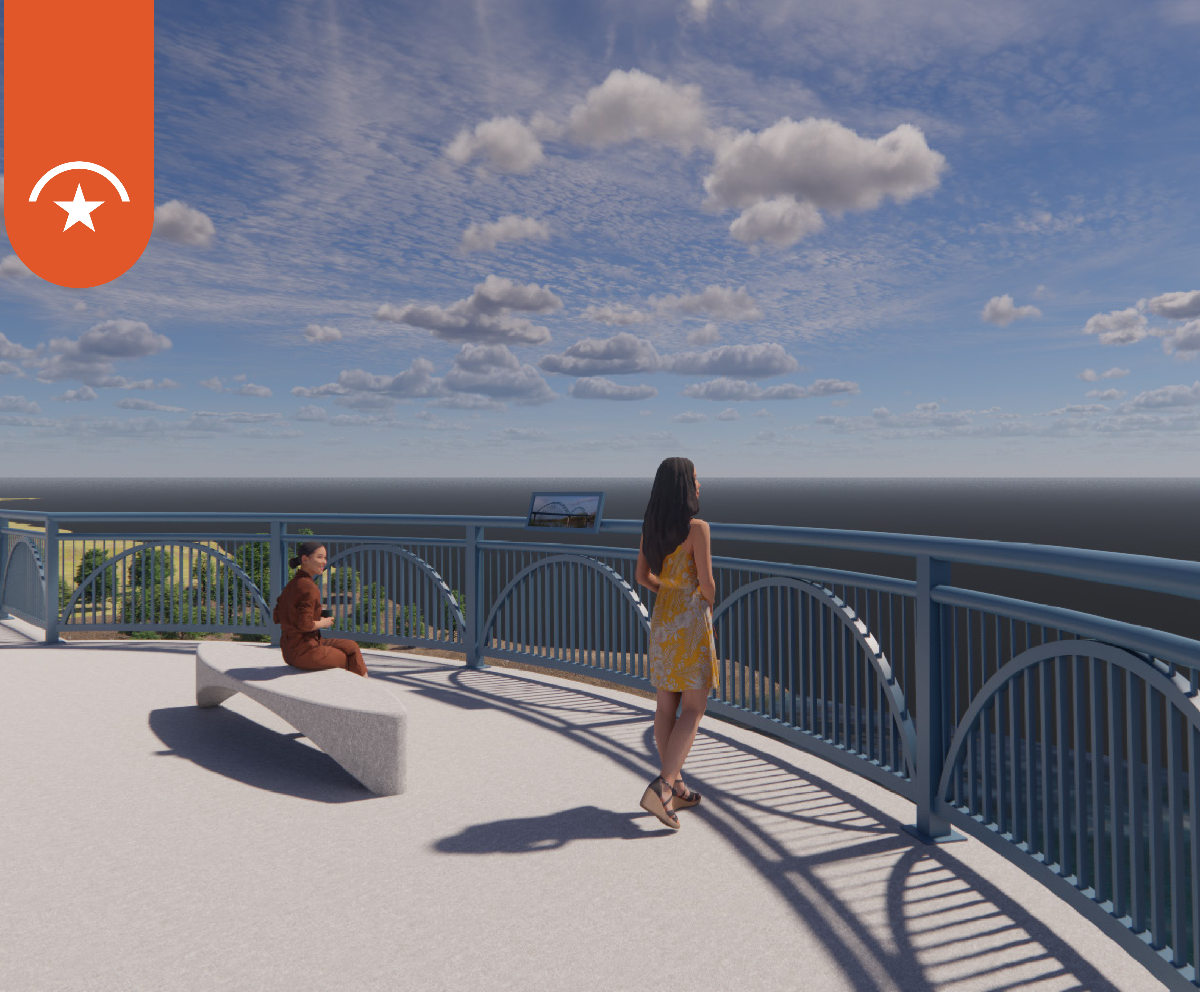
- State Senator E. Bert Collard, great-grandfather of current Leavenworth County Attorney Todd Thompson, introduced a bill in the Kansas Legislature in 1952 authorizing the issuance of revenue bonds to finance the bridge's construction.



# PROJECT STAKEHOLDERS

## PLANNING INPUT RECEIVED FROM:

- Leavenworth City Commission
- Leavenworth City Manager's Office
- US Army Garrison Fort Leavenworth
- Leavenworth Waterworks
- Leavenworth County Historical Society
- Leavenworth Parks & Recreation Department
- Lansing/Leavenworth Chamber of Commerce
- Leavenworth County Development Corporation
- US Coast Guard
- Union Pacific Railroad
- Kansas Department of Health & Environment
- US Prisons, Leavenworth
- Area utility providers



# AESTHETIC CONCEPTS

## OVERLOOK

- Two overlooks with seating areas.
- Scenic views face south toward the City of Leavenworth.

Please note that design and aesthetic features may change due to permitting or construction needs.



# AESTHETIC CONCEPTS

## RAILING, FENCING & LIGHTING FEATURES:

- Designed in collaboration with stakeholders.
- Meet Kansas, Missouri, Federal Highway Administration and railroad safety standards.
- Incorporate aspects of the current Centennial Bridge.

Please note that design and aesthetic features may change due to permitting or construction needs.



# AESTHETIC CONCEPTS

## STRUCTURE CONSIDERATIONS

- Design incorporates characteristics of the current bridge, including arches and Centennial blue railings and light poles.
- Variable height arched railing over railroad.
- Designed using stakeholder input.

Please note that design and aesthetic features may change due to permitting or construction needs.



# HOW DO YOU USE CENTENNIAL BRIDGE?

**PLACE STICKERS IN EACH ZONE THAT APPLIES**

Place stickers below

COMMUTING TO WORK

VISITING FRIENDS AND FAMILY

TRAVELING TO KANSAS CITY

TRAVELING TO KANSAS CITY  
INTERNATIONAL AIRPORT (MCI)

MILITARY SERVICE



  
**CENTENNIAL**  
B R I D G E

**THANK YOU  
FOR COMING!**

